



**South American Championship 49er, 49erFX
and Nacra 17 Foil**
late Clube de Santa Catarina - November 18-24,
2018



The Organizing Authority is the Confederação Brasileira de Vela (CBVela), the late Clube de Santa Catarina in conjunction with the International 49er Class Association and International Nacra 17 Class Association.

1 RULES

- 1.1 The regatta will be governed by the rules as defined in *The Racing Rules of Sailing*.
- 1.2 Where there is conflict with the Notice of Race, the Sailing Instructions shall prevail except that neither shall change nor alter any Class Rules.
- 1.3 No national authority prescriptions will apply.
- 1.4 If there is a conflict between languages the English text will prevail.
- 1.5 [SP] denotes a rule for which a standard penalty may be applied by the race committee without a hearing or a discretionary penalty applied by the International Jury with a hearing;
- 1.6 [NP] denotes a rule that shall not be grounds for protests by a boat. This changes RRS 60.1(a); and
- 1.7 [DP] denotes a rule for which the penalty will be determined by the jury.

2 NOTICES TO COMPETITORS

Notices to competitors will be posted on the official notice board located near of the Race Office, beside the bathroom on the lower level of the main building.

3 CHANGES TO SAILING INSTRUCTIONS

Any change to the sailing instructions will be posted not less than two hours before the scheduled warning signal on the day it will take effect, except that any change to the schedule of races, will be posted by 2000 the day before it will take effect.

4 SIGNALS MADE ASHORE

- 4.1 Signals made ashore will be displayed at the official flagpole located beside the launching ramp. When a signal is displayed over a class flag, it applies to that fleet only.
- 4.2 [NP] [DP] Flag D displayed ashore with one sound signal this means: "the warning signal will be made not less than 60 minutes after flag D is displayed or not before the scheduled time, whichever is later. Boats shall not leave their allocated berth until this signal is made.

5 SCHEDULE OF RACES

- 5.1 When more than one race, or sequence of races, will be held on the same day, the warning signal for each succeeding race will be made as soon as practicable. A maximum of three races are scheduled per day.
- 5.2 To warn sailors that races or sequences of races will begin, the Race Committee will host the Orange Flag at least 5 minutes before the warning signal of the first class to start on that race.
- 5.3 Possible Time for the first warning signal for each class as below:

Class / Time	Race Area	20/11	21/11	22/11	23/11	24/11
Nacra 17	2			13:00	13:00	13:00
49er		13:00	13:00	14:30	14:30	14:30
29er		13:10	13:10	14:40	14:40	14:40
Nacra 17	Kite	13:00	13:00			

- 5.4 The Schedule as 5.3 will be posted from 21st until 23rd November on the Official Notice Board until 20h00 if there is a change.
- 5.5 On the last day no warning signal will be made after 16h00.

6 CLASS FLAGS

- 6.1 49er 49er White Flag
- 6.2 49er FX 49er FX Blue Flag
- 6.3 Nacra 17 Nacra 17 White Flag

7 RACING AREAS

- 7.1 Attachment B shows the location of the race areas.
- 7.2 The Race Committee may change a Class for other Race Area not later than two hours before the scheduled warning signal of the first race of the day. However:
- When AP Flag is displayed on shore, the race area may be changed until 30 minutes before the Postponement Flag is removed for that Race Area; and
 - When AP Flag is displayed on the water, the Race Area may be changed. The Race Committee Vessel will display the LIMA Flag over the Classe Flag and will move to the new race area.

8 THE COURSES

- 8.1 Attachment A shows the course to be sailed, the order in which the marks are to be passed, the side on which each mark is to be left, and the signals indicating the number of rounds to be sailed.
- 8.2 There will be gates at the leeward mark.
- 8.3 A gate may be replaced by a single mark to be left to port.

9 MARKS

- 9.1 A Race Committee vessel signaling a change of course is a mark.
- 9.2 Marks 1, 2, 3 and 4 or gates and offset Marks (when used), will be informed at the Official Notice Board until 18h00 of 19 November 2018.
- 9.3 A Race Committee may alter the color and form of the marks on daily basis, by posting a Notice on the Official Notice Board until 19h00 the day before it will take effect.

10 THE START

- 10.1 The starting line will be between staff displaying orange flag on the starting vessel and a starting mark at the end of the starting line.
- 10.2 [DP] Boats whose warning signal has not been made shall avoid the starting area.
- 10.3 A boat starting later than four minutes after her starting signal will be scored Did Not Start. This changes RRS A4 and A5 and they will be scored Did Not Finish without a hearing.

OfficiaooadsfoadsifParpcoand

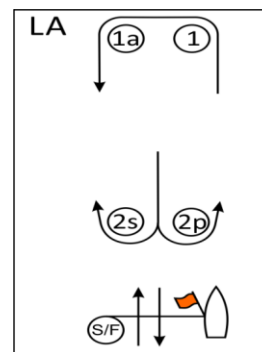
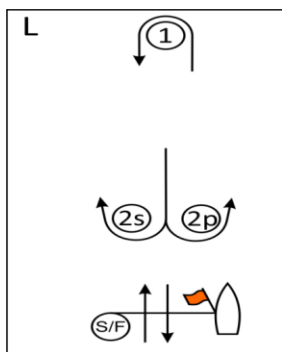
Official Sponsor:



- 11 THE FINISH**
The finishing line will be between a staff displaying blue flag on the signal boat and a finishing mark.
- 12 TIME LIMITS**
- 12.1** If no boat has passed Mark 1/1a within 10 minutes after starting, the race will be abandoned.
- 12.2** Boats failing to finish within 10 minutes after the first boat sails the course and finishes will be scored Did Not Finish without a hearing. This changes RRS 35, A4 and A5.
- 12.3** The Race Committee will lay a course to be sailed in 30 minutes. Fail to achieve this time will not be grounds for a request for redress. This changes Rula 62.1(a).
- 12.4** Time limit for a race to be sailed is 50 minutes.
- 13 PENALTY SYSTEM**
- 13.1** RRS 44.1 is changed so that the Two-Turns Penalty is replaced by the One-Turn Penalty.
- 13.2** Appendix P will apply for both Classes.
- 13.3** [NP][DP] A Boat that has taken a penalty according to rule 44.1, shall fill the specific form at the Race Office.
- 14 PROTESTS AND REQUESTS FOR REDRESS**
- 14.1** [NP][DP] Protest forms are available at the race office. Protests and requests for redress or reopening shall be delivered there within the protest time limit.
- 14.2** The protest time limit will be posted on the jury notice board located at the Race Office. The protest time limit will be 60 minutes after the race committee signal boat docks for Race Areas 1, 2 and 3 and 40 minutes for Race Area Kite. The same time limit applies to protests by the race committee and jury about incidents they observe in the racing area. This time limit also applies to Requests for Redress. This changes RRS 61.3 and 62.2.
- 14.3** Notices will be posted within 20 minutes of the protest time limit to inform competitors of hearings in which they are parties or named as witnesses. Hearings will be held in the jury room/club library located on the first floor. Hearings may start before the scheduled time with the agreement of all parties.
- 14.4** The race committee or jury intending to protest a boat under RRS 60.2 or 60.3 will comply with RRS 61.1(b) by informing her by posting a notice before the end of the protest time limit of the last fleet to finish.
- 14.5** Notices of Protests from the Race Committee, Jury or Technical Committee will be posted to inform competitors of hearings according to RRS 61.1(b).
- 14.6** On the last scheduled day of racing a request for redress from a jury decision shall be delivered no later than 30 minutes after the decision was posted. This changes RRS 62.2.
- 15 SCORING**
- 15.1** Rule B8 is deleted.
- 15.2** When fewer than five races are completed, the final points of a boat will be all points without a discard. When five to twelve races are completed there will be one discard.
- 15.3** To request correction of an alleged error in posted race or series results, a boat shall complete a scoring enquiry form available at the race office. Scoring enquiry forms shall be delivered to the race office. A scoring enquiry may be regarded as a request for redress.
- 16 SAFETY [DP][NP]**
- 16.1** Boats not leaving the shore for the day's races shall notify the race office as soon as possible.
- 16.2** A boat that retires from a race shall notify the race committee as soon as possible.

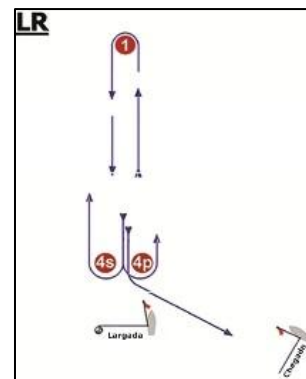
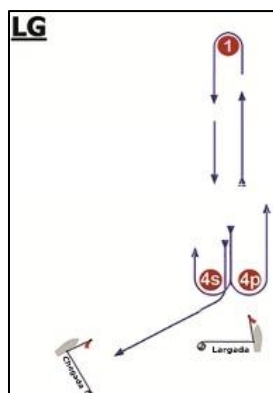
- 17 REPLACEMENT OF CREW OR EQUIPMENT [NP][DP]**
- 17.1** Any boat or equipment may be checked for compliance with the class rules and sailing instructions at any time.
- 17.2** Any replacement of crew or equipment must be petitioned to the jury.
- 17.3** Only one set of sails shall be used during the regatta. The sails shall be presented and stamped during the initial inspection.
- 17.4** Only one forestay shall be used during the regatta
- 17.5** All boats, when not afloat, shall be placed on their allocated places.
- 18 TRASH DISPOSAL[NP][DP]**
- As sailors, we seek to protect and restore our oceans and coastal waters. Boats shall not intentionally put trash in the water. Trash may be placed aboard support and race committee boats. The penalty for breaking RRS 55 is at the discretion of the Jury and may be less than disqualification.
- 19 RADIO COMMUNICATION [NP][DP]**
- A boat shall neither make radio transmissions while racing nor receive radio communications not available to all boats. This restriction also applies to mobile telephones.
- 20 PRIZES**
- The Organizing Authority will provide prizes to the first three boats in the boys 49er Championship.
- 21 DISCLAIMER OF LIABILITY**
- Competitors participate in the regatta entirely at their own risk. See RRS 4, Decision to Race. The Organizing Authority will not accept any liability for material damage or personal injury or death sustained in conjunction with or prior to, during or after the regatta.
- 22 INSURANCE [NP][DP]**
- Each participating boat shall be insured with valid third-party liability insurance with a minimum cover of Euro 1,500,000 or the equivalent per incident.

Attachment A Course Layout



Percurso L – Barla/Sota com chegada em popa	
Sinal	Sequência das montagens
L2	Largada - 1 - 2s/2p - 1 - Chegada
L3	Largada - 1 - 2s/2p - 1 - 2s/2p - 1 - Chegada
L4	Largada - 1 - 2s/2p - 1 - 2s/2p - 1 - 2s/2p - 1 - Chegada

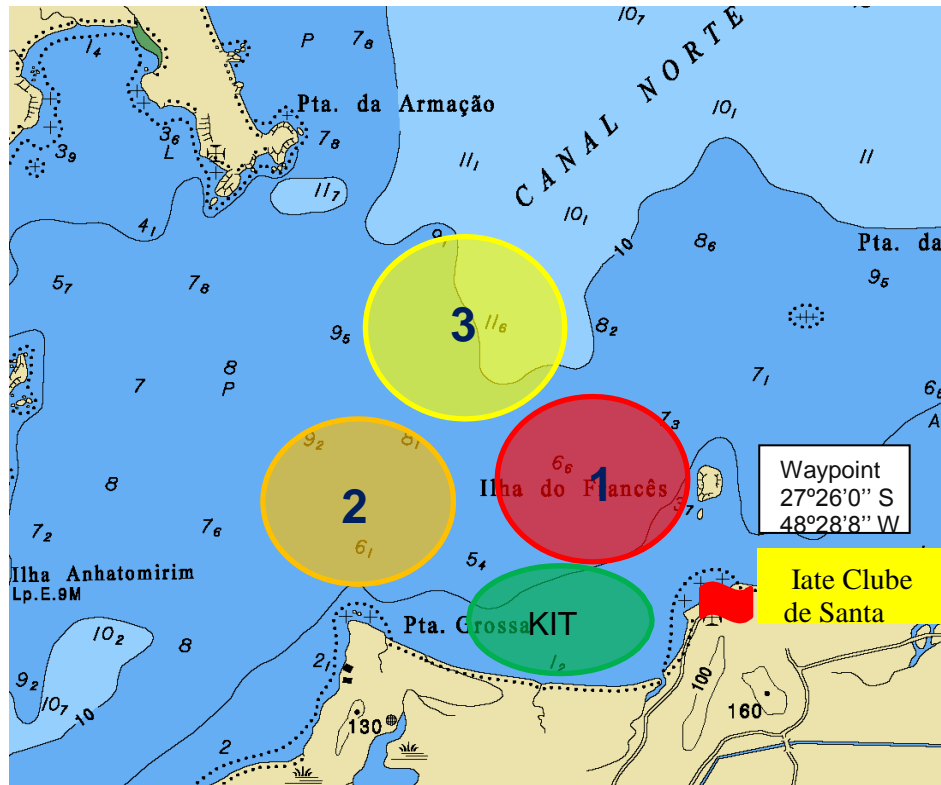
Percurso LA – Barla/Sota com marca de 'Offset' e chegada em Popa	
Sinal	Sequência das montagens
LA2	Largada - 1 - 1a - 2s/2p - 1 - 1a - Chegada
LA3	Largada - 1 - 1a - 2s/2p - 1 - 1a - 2s/2p - 1 - 1a - Chegada
LA4	Largada - 1 - 1a - 2s/2p - 1 - 1a - 2s/2p - 1 - 1a - 2s/2p - 1 - 1a - Chegada



Percurso LG – Barla/Sota com chegada no través para boreste	
Sinal	Sequência das montagens
LG2	Largada - 1 - 4s/4p - 1 - 4s - Chegada
LG3	Largada - 1 - 4s/4p - 1 - 4s/4p - 1 - 4s - Chegada
LG4	Largada - 1 - 4s/4p - 1 - 4s/4p - 1 - 4s/4p - 1 - 4s - Chegada

Percurso LR – Barla/Sota com chegada no través para bombordo	
Sinal	Sequência das montagens
LR2	Largada - 1 - 4s/4p - 1 - 4p - Chegada
LR3	Largada - 1 - 4s/4p - 1 - 4s/4p - 1 - 4p - Chegada
LR4	Largada - 1 - 4s/4p - 1 - 4s/4p - 1 - 4s/4p - 1 - 4p - Chegada

Attachment B Course Areas



Official Sponsor:

Official Sponsor:

